

Responsibilities of the Homeowner

There are times when an individual site will not have power when nearby homes do. The cause could be an individual site outage caused by trees, a blown transformer or fuse, or electric equipment at the site.

Consumers may be unaware that some of the electric equipment on their home is their responsibility to maintain. When damage occurs to any of that equipment, consumers should contact a qualified electrician to make the needed repairs.

When the equipment pulls away from the house, it still may be energized. Contact South Central Power to de-energize the electric service, so an electrician can make repairs. Once the electrician completes the work, South Central Power can then reconnect the electricity.

Please note that some communities require an inspection before South Central Power may restore electric service.

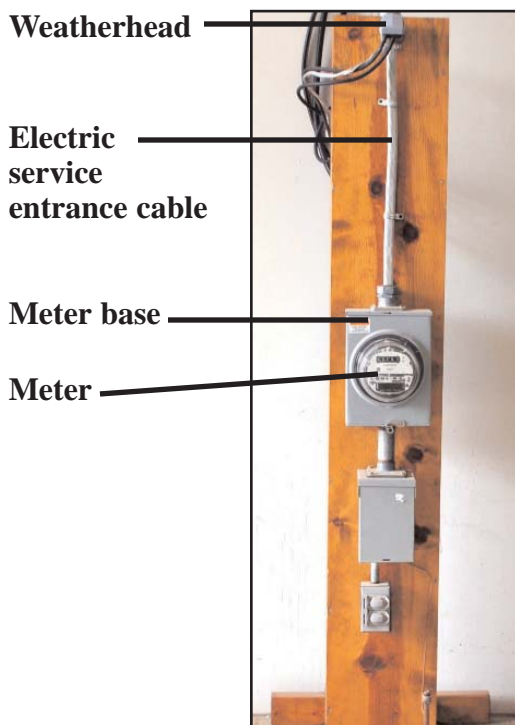
For all services, the consumer is responsible for all the wiring inside the structure and the breaker/fuse panel whether inside or outside the structure.

Overhead electric service

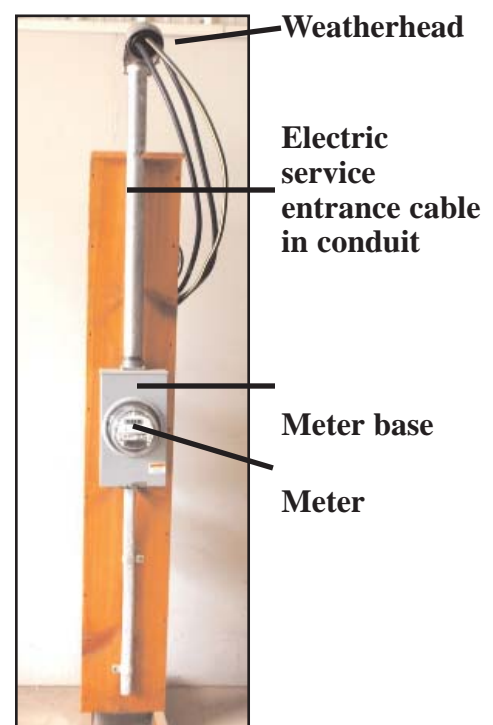
South Central Power is responsible for the electric meter and the electric service wires from the pole up to the point where the wires interconnect with the wires at the weatherhead.

Consumers must maintain the electric service entrance, which includes the meter base, electric service cable and weatherhead. To provide safe clearance, the weatherhead is mounted on the side of the house or attached to a mast a safe distance above the meter base. The weatherhead is connected to the meter base by service entrance cable or cable inside conduit.

Sample overhead service with electric cable



Sample overhead service with electric cable in conduit

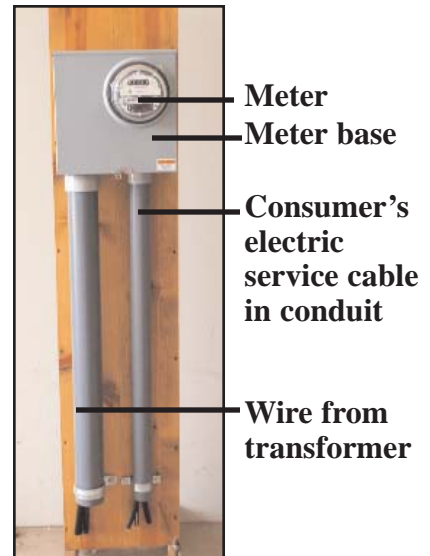


Underground electric service

South Central Power is responsible for the meter and the wire going from the transformer to the meter base.

The consumer's responsibility includes the meter base, the wire from the meter base into the house or outside breaker and conduit from the meter base to the ground.

Sample underground service with electric cable

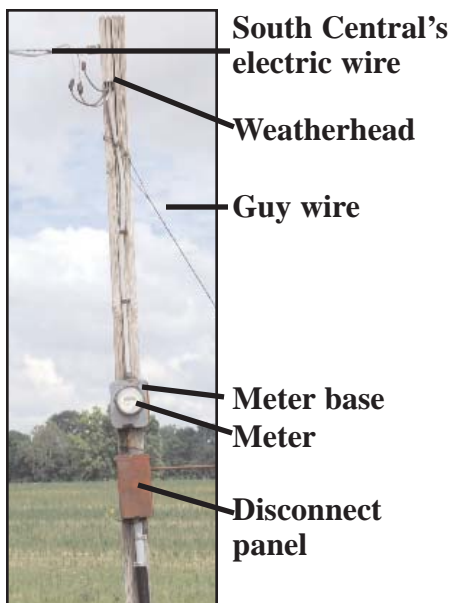


Meter poles and pedestals

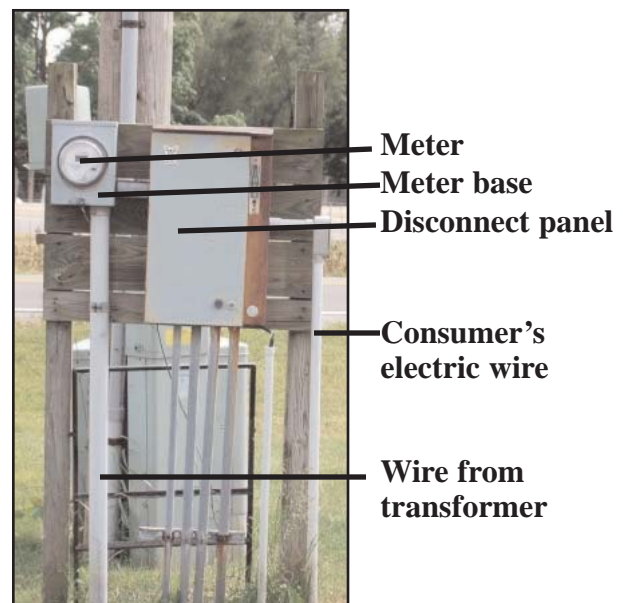
Some properties use a meter pedestal to mount the meter base. The consumer is responsible for the entire structure and all equipment on it. South Central Power is responsible only for the meter and the wire from the transformer to the meter base.

If a meter is mounted on a pole, the consumer is responsible for the weatherhead, the meter base, the disconnect panel and any wire between the three. If the pole serves only the consumer's property, then it along with any guy wires and anchors is the consumer's responsibility, as well. If the electric line into the pole also continues on to serve other properties, the pole and any guy wires and anchors is South Central Power's responsibility. In both cases, South Central Power is responsible for the wire to the pole and the meter.

Meter pole



Meter pedestal



Tree trimming

During an outage or a storm event, tree trimming crews often must first cut through fallen limbs and downed trees that prevent line crews from restoring power. During these emergency situations, tree contractors working on behalf of South Central Power do not haul away what has been trimmed. Nor do they come back later to remove the debris. Clean-up and removal of the tree-related debris becomes the property owner's responsibility.